

Manuals+

User Manuals Simplified.



star MCW10 Wireless LAN Unit User Guide

February 26, 2022 February 27, 2022 [Leave a comment](#)

[Home](#) » [Star](#) » [star MCW10 Wireless LAN Unit User Guide](#) 

Contents [[hide](#)]

- [1 star MCW10 Wireless LAN Unit](#)
- [2 Wireless LAN Unit Online Manual](#)
- [3 Checking the Supplied Accessories](#)
- [4 Installing](#)
 - [4.1 Caution](#)
- [5 SETUP](#)
 - [5.1 When using iOS/Android](#)
 - [5.2 When using Windows](#)
 - [5.3 MEMO](#)
 - [5.4 This product is available in only the following countries.](#)
- [6 Notes for security when using wireless LAN products](#)
- [7 Safety Precautions](#)
- [8 Documents / Resources](#)
 - [8.1 Related Manuals / Resources](#)



star MCW10 Wireless LAN Unit



This document explains the procedure prior to using Wireless LAN Unit. Store this document carefully after reading it.

Wireless LAN Unit Online Manual

When you use this product, refer to the online manual. The following useful information for using this product is included in the online manual.

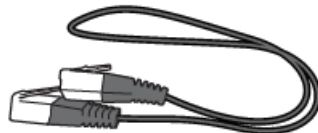
- Detailed procedure for installation/setup
- Initialization procedure -Troubleshooting
- Models supported for connection
- Latest information about this product etc. MCW10 online manual.

Checking the Supplied Accessories

Before setup, check that all of the supplied accessories are included. Please contact the seller if there are deficiencies or broken accessories.



- Wireless LAN Unit



- LAN Cable (for communication)



- USB Cable (for power)

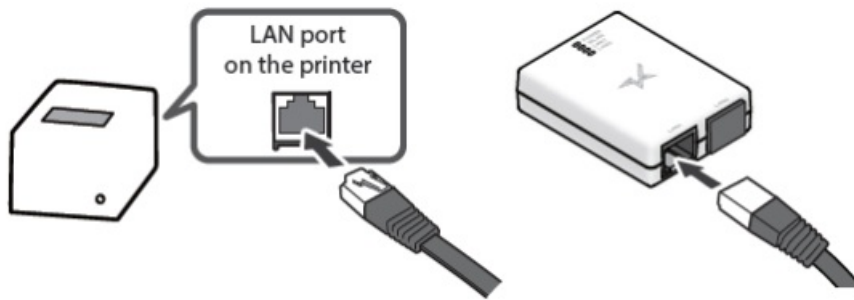


- Two double-sided tapes (for mounting the unit)
- Easy Setup Guide (this manual)

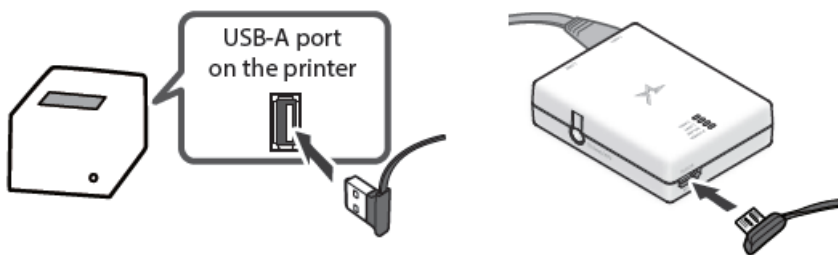
Installing

To ensure safety, be sure to turn OFF the power and all devices connected to the printer, and then disconnect the printer power plug from the electric outlet before beginning installation.

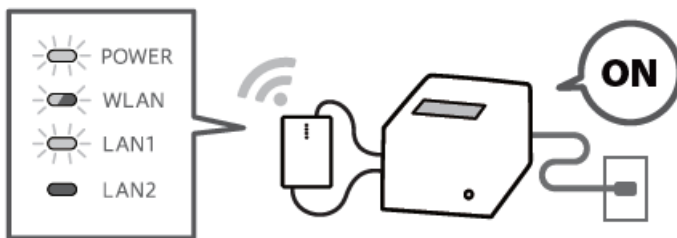
1. Use the included LAN cable to connect the printer and Wireless LAN Unit.



2. Connect the printer and Wireless LAN Unit by using the included USB cable to ready to supply power.



3. Connect the printer's power cable or the included AC adapter to an outlet, and then turn on the printer power. Check that the POWER LED and LAN1 LED are lit, and that the WLAN LED is blinking slowly.



Use the mounting double-sided tapes that were included in the package and apply it at suitable positions.



Caution

- When installing the unit, place the unit so that the connected LAN cable and USB cable do not get caught in anything.
- It will not be possible to check the MAC address or other information after the product has been mounted with the included double-sided tapes for mounting the unit. Use the memo in the upper right.
- For examples of installing this product with various printers, check the Wireless LAN Unit online manual.

SETUP

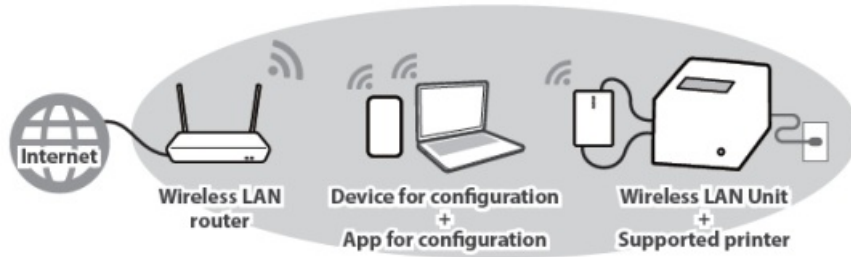
Preparing the operating environment

To connect the printer to a wireless network with Wireless LAN Unit, it needs to prepare a wireless access point such

as a wireless LAN router and a device for configuring the settings

Preparing/setting up the configuration app

The wireless network settings for Wireless LAN Unit are configured by using a configuration app. Download and install the app from the web address on the right.



When using iOS/Android

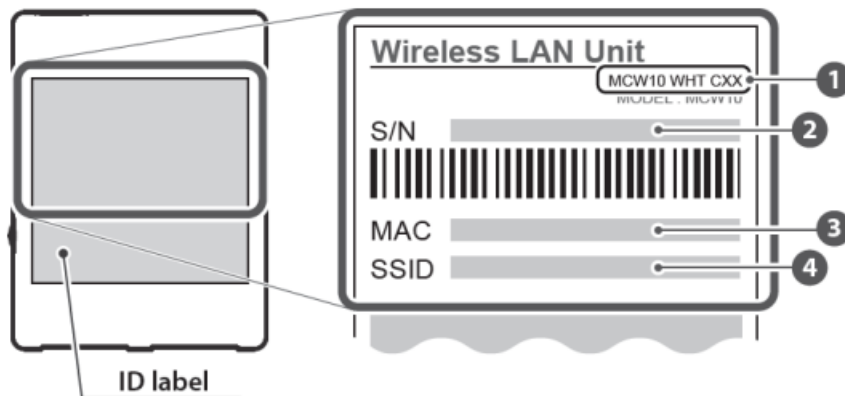
- Open the configuration app, and select [Start Guide (Initial Settings)] > [Use Star Wireless LAN Unit].
- Finish the wireless network settings by following the instructions in the app.

Configuration app download www.star-m.jp/mcw10-app.html

When using Windows

- From the Start menu, select [Star Windows Software] – [Wireless LAN Unit Utility].
- Finish the wireless network settings by following the instructions in the app.

Important information about the unit that is required for setup is printed on the ID label on the back of the unit. If you are planning to mount the unit with the double-sided tapes, make a note of the following information in advance.



MEMO

1. Model name
2. Serial number (16 digits)
3. MAC address (12 digits)
4. SSID

This product is available in only the following countries.

MCW10-WHT-C01

U.S.A (US), Canada(CA)

MCW10-WHT-C02

Belgium (BE), Bulgaria (BG), Czech Republic (CZ), Denmark (DK), Germany (DE), Estonia (EE), Ireland (IE), Greece (EL), Spain (ES), France (FR), Croatia (HR), Italy (IT), Cyprus (CY), Latvia (LV), Lithuania (LT), Luxembourg (LU), Hungary (HU), Malta (MT), Netherlands (NL), Austria (AT), Poland (PL), Portugal (PT), Romania (RO), Slovenia (SI), Slovakia (SK), Finland (FI), Sweden (SE), Switzerland (CH), Norway (NO), Iceland (IS), Liechtenstein (LI), Turkey (TR), United Kingdom (UK), Australia (AU) and New Zealand (NZ)

MCW10-WHT-C03

Japan (JP)

* The model name can be found on the ID label. For details, refer to the online manual.

Notes for security when using wireless LAN products

Using a wireless LAN allows devices to communicate via radio waves instead of using a network cable. While this has the advantage of being able to connect devices to a LAN freely, radio waves can reach all places beyond obstacles such as walls within a certain range. If security settings are not configured, incidents such as the following may occur.

- Interception of communications by a third party
- Unauthorized intrusion into the network
- Leakage of information such as personal information, IDs, or card information
- Spoofing and falsification of communication data
- System or data destruction

Normally, wireless LAN cards and access points have a security system for handling these vulnerabilities, so configuring the security settings of wireless LAN products decreases the likelihood that they will be exploited. We recommend that you thoroughly understand the vulnerabilities in using wireless LAN products without configuring the security settings, and then configure the security settings at your discretion and responsibility before using this product.

Safety Precautions

- Use only indoors.
- Do not use in locations where the product may contact liquids such as water or oil, or where there are large amounts of debris or dust.
- If it emits smoke or an abnormal smell, immediately unplug the connected printer from the outlet.

Star Micronics Co.,Ltd.

20-10 Nakayoshida, Suruga-ku, Shizuoka-shi, Shizuoka 422-8654 Japan

UK REP Star Micronics Europe Ltd.

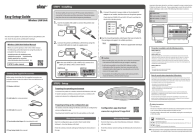
Star House, Peregrine Business Park, Gomm Road, High Wycombe, Bucks. HP13 7DL, U.K.

EC REP AR Experts

P.O.Box 5047 3620 AA Breukelen The Netherlands

For the owners of other companies' trademarks mentioned in this document, see Trademarks in our website (<https://www.star-m.jp/eng/trademarks.html>).

Documents / Resources



[star MCW10 Wireless LAN Unit](#) [pdf] User Guide
MCW10, R49MCW10, MCW10 Wireless LAN Unit, Wireless LAN Unit

Related Manuals / Resources

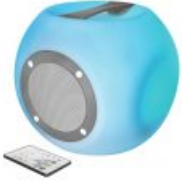


[Trust Wireless Headphone User Guide](#)

User Guide WWW.TRUST.COM/2288/FAQ TRUST INTERNATIONAL BV-LAAN VAN BARCELONA-3317DD,DORDRECHT,NL ©20-11-2018 TRUST ALL RIGHTS RESERVED.

[Trust LARA Wireless Speaker User Guide](#)

Trust LARA Wireless Speaker User Guide Charging Instructions Bluetooth Connection LED Indicator Warning



[Logitech YR0080 Wireless Keyboard Installation Guide](#)

www.logitech.com/support/k680 Windows mac logitech.com/downloads
650-040023 00A



[Trust 24332 Wireless Keyboard User Guide](#)

Trust 24332 Wireless Keyboard Overview CONNECTION FUNCTION
WWW.TRUST.COM/24332/FAQ



Leave a comment

Your email address will not be published.

Comment

Name

Email

Website

Save my name, email, and website in this browser for the next time I comment.

[Manuals+](#),

- [home](#)
- [privacy](#)