



LINUX DRIVER INSTALLATION MANUAL

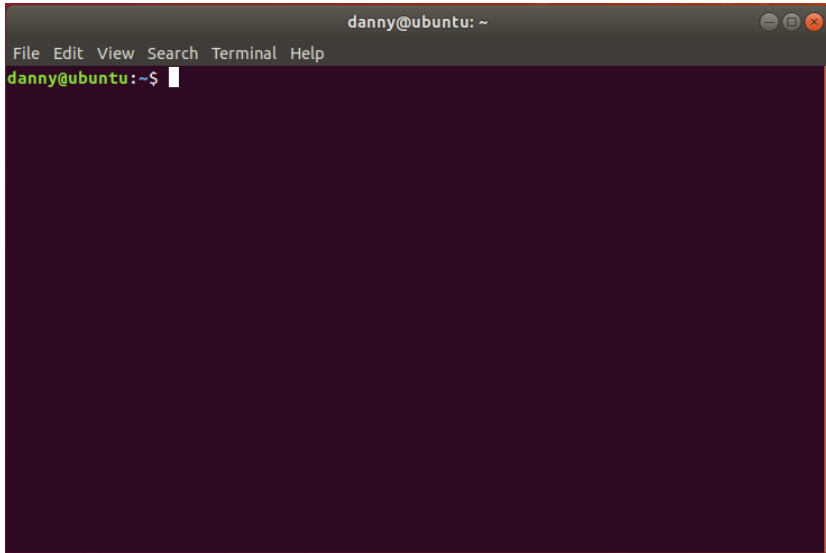
Aroot Co.,Ltd.

The manual and product are protected by copyright.

3" THERMAL POS PRINTER MODEL : SLK-TS100

sewoo

Step 1. Open Linux terminal

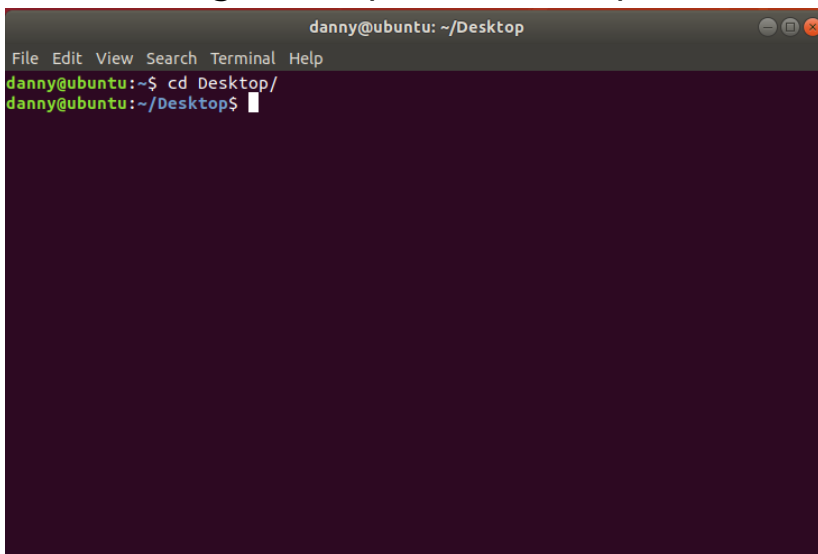


```
danny@ubuntu: ~  
File Edit View Search Terminal Help  
danny@ubuntu:~$
```

Step 2. Enter driver dir.

Command Syntax: `cd [dirName]`

Sample for Entering Desktop: `cd Desktop/`

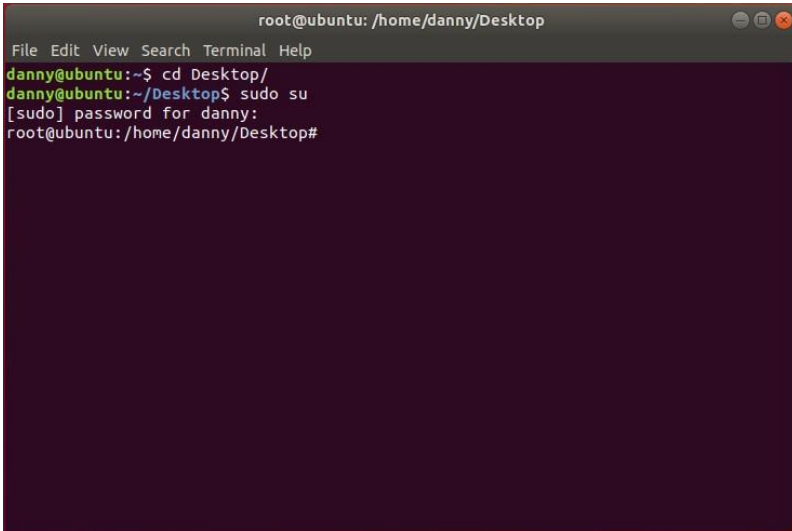


```
danny@ubuntu: ~/Desktop  
File Edit View Search Terminal Help  
danny@ubuntu:~$ cd Desktop/  
danny@ubuntu:~/Desktop$
```

Step 3. Acquire root user access

Command syntax for Ubuntu: `sudo su`

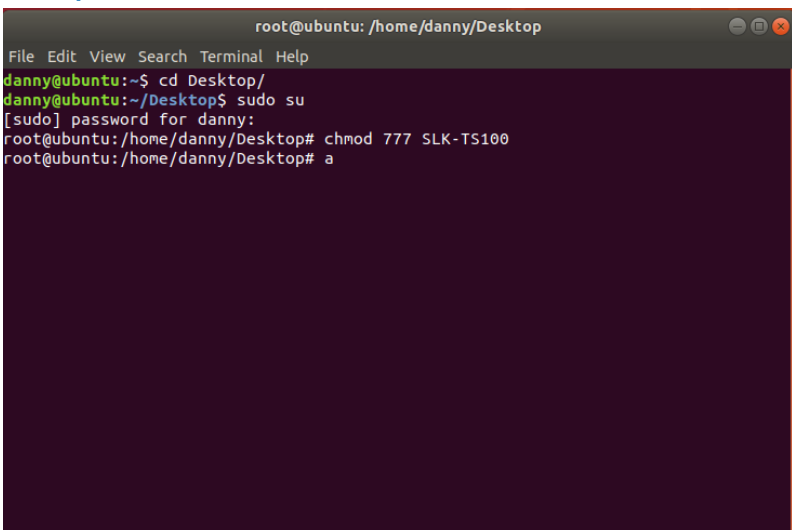
This operation requires the password of current user.

A terminal window titled 'root@ubuntu: /home/danny/Desktop' with a menu bar (File, Edit, View, Search, Terminal, Help). The prompt is 'danny@ubuntu:~\$'. The user enters 'cd Desktop/' and the prompt changes to 'danny@ubuntu:~/Desktop\$'. Then, the user enters 'sudo su'. A prompt '[sudo] password for danny:' appears. After the password is entered (not visible), the prompt changes to 'root@ubuntu: /home/danny/Desktop#'.

```
root@ubuntu: /home/danny/Desktop
File Edit View Search Terminal Help
danny@ubuntu:~$ cd Desktop/
danny@ubuntu:~/Desktop$ sudo su
[sudo] password for danny:
root@ubuntu: /home/danny/Desktop#
```

Step 4. Add 777 access to driver

Command syntax: `chmod 777 SLK-TS100`

A terminal window titled 'root@ubuntu: /home/danny/Desktop' with a menu bar (File, Edit, View, Search, Terminal, Help). The prompt is 'danny@ubuntu:~\$'. The user enters 'cd Desktop/' and the prompt changes to 'danny@ubuntu:~/Desktop\$'. Then, the user enters 'sudo su'. A prompt '[sudo] password for danny:' appears. After the password is entered, the prompt changes to 'root@ubuntu: /home/danny/Desktop#'. The user then enters 'chmod 777 SLK-TS100'. The prompt remains 'root@ubuntu: /home/danny/Desktop#'.

```
root@ubuntu: /home/danny/Desktop
File Edit View Search Terminal Help
danny@ubuntu:~$ cd Desktop/
danny@ubuntu:~/Desktop$ sudo su
[sudo] password for danny:
root@ubuntu: /home/danny/Desktop# chmod 777 SLK-TS100
root@ubuntu: /home/danny/Desktop# a
```

Step 5. Run the driver file

Command syntax: `./SLK-TS100`

```
root@ubuntu: /home/danny/Desktop
File Edit View Search Terminal Help
danny@ubuntu:~$ cd Desktop/
danny@ubuntu:~/Desktop$ sudo su
[sudo] password for danny:
root@ubuntu:/home/danny/Desktop# chmod 777 SLK-TS100
root@ubuntu:/home/danny/Desktop# ./SLK-TS100
```

Step 6. Manage Printer

If the installation success, please go to <http://localhost:631>, or <http://127.0.0.1:631> to manage your printer:

```
root@ubuntu: /home/danny/Desktop
File Edit View Search Terminal Help
ServerBin tag not present in cupsd.conf - using default
DataDir tag not present in cupsd.conf - using default

ServerRoot =
ServerBin  =
DataDir    =

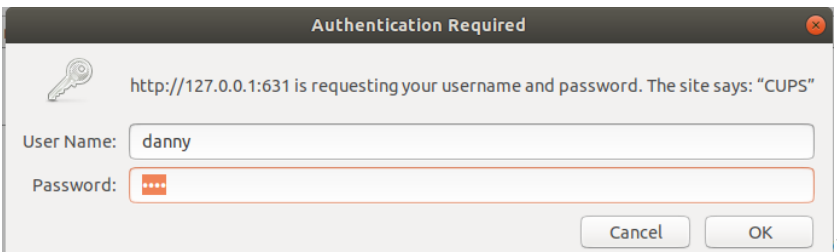
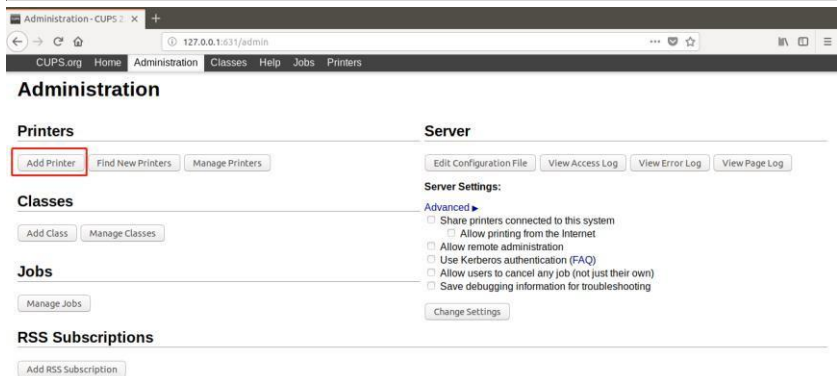
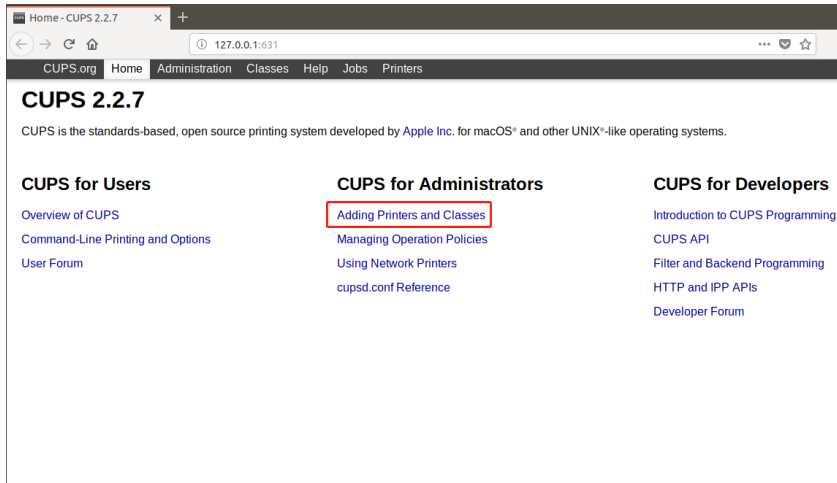
./setup: 111: [: missing ]
cp: cannot create regular file '/usr/lib64/cups/filter': No such file or directory
chmod: cannot access '/usr/lib64/cups/filter/sewoo': No such file or directory

11
44
Restarting CUPS
[ ok ] Stopping cups (via systemctl): cups.service.
[ ok ] Starting cups (via systemctl): cups.service.

Go to http://localhost:631, or http://127.0.0.1:631 to manage your printer please!
root@ubuntu:/home/danny/Desktop# A
```

Step 7. Add printer

Please click [Adding Printer and Classes](#) link at CUPS page and [Add Printer](#) at Administration page. Authentication is required for the first operation.



At add Printer page, select device **SEWOO SLK series** and click Continue. Then click continue if there is nothing have to be change at the following page.

Add Printer

Add Printer

Local Printers: ☐ CUPS-BRF (Virtual Braille BRF Printer)
☐ Serial Port #1
☐ HP Printer (HPLIP)
☐ HP Fax (HPLIP)
☒ SEWOO SLK series (SEWOO SLK series)

Discovered Network Printers:

Other Network Printers: ☐ Internet Printing Protocol (https)
☐ Internet Printing Protocol (ipp)
☐ AppSocket/HP JetDirect
☐ LPD/LPR Host or Printer
☐ Backend Error Handler
☐ Internet Printing Protocol (ipps)
☐ Internet Printing Protocol (http)

Continue

Add Printer

Add Printer

Name:
(May contain any printable characters except "/", "#", and space)

Description:
(Human-readable description such as "HP LaserJet with Duplexer")

Location:
(Human-readable location such as "Lab 1")

Connection: usb://SEWOO/SLK%20series

Sharing: ☐ Share This Printer

Continue

Click add printer directly at this page.

Add Printer

Add Printer

Name: SEWOO_SLK_series
Description: SEWOO SLK series
Location:
Connection: usb://SEWOO/SLK%20series
Sharing: Do Not Share This Printer
Make: SEWOO
Model: SEWOO TS100 (en)

Or Provide a PPD File: No file selected.

Check if any default setting is needed then click set default options.

Set Printer Options

Set Default Options for SEWOO_SLK_series

[General Control](#) [Cut Options Logo Control](#) [Cash Drawer Control Banners](#) [Policies Buzzer](#)

General

Media Size: ▾

Select what you want to test at Maintenance dropdown box and feel free to test your printer.

SEWOO_SLK_series

SEWOO_SLK_Series (Idle, Accepting Jobs, Not Shared)

Maintenance

Administration

Description: SEWOO SLK series

Location:

Driver: TS100 (grayscale)

Connection: usb://SEWOO/SLK%20series

Defaults: job-sheets=none, none media=om_x-72-mmy-210-mm_71.97x209.9mm sides=one-sided

- .

SEWOO_SLK_Series

SEWOO_SLK_Series (Idle, Accepting Jobs, Not Shared)

Maintenance

Administration

Maintenance

Print Test Page

Pause Printer

Reject Jobs

Move All Jobs

Cancel All Jobs

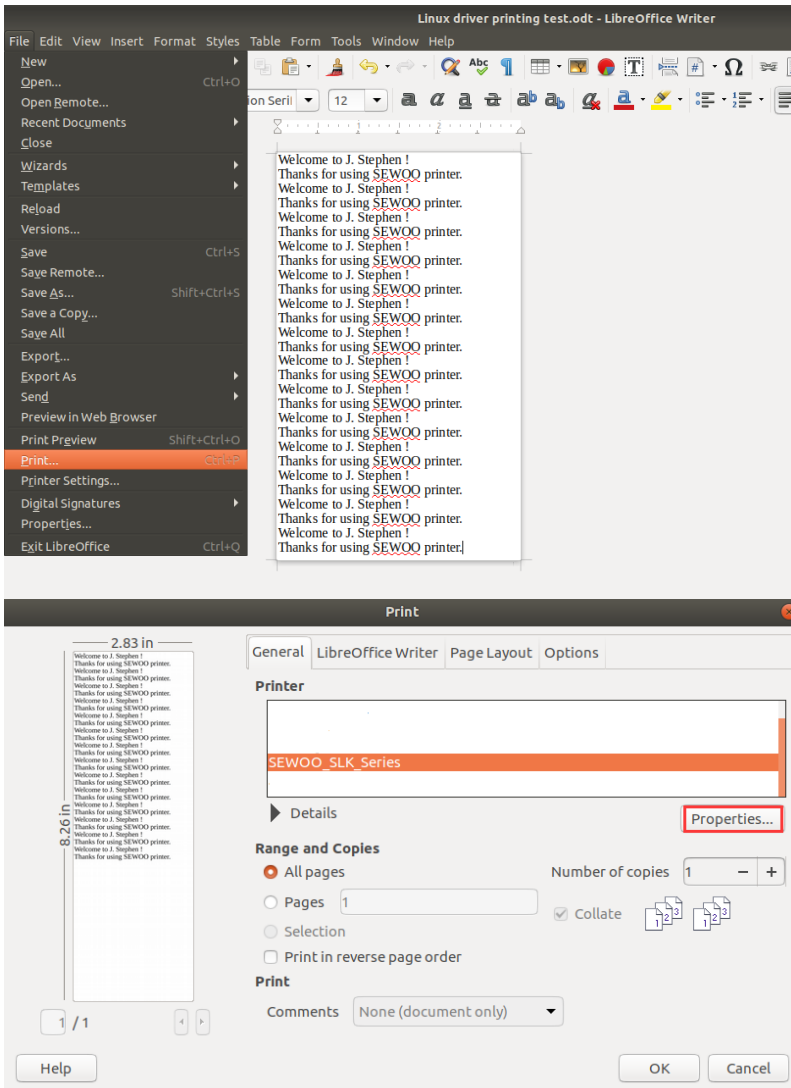
OO SLK series

00 (grayscale)

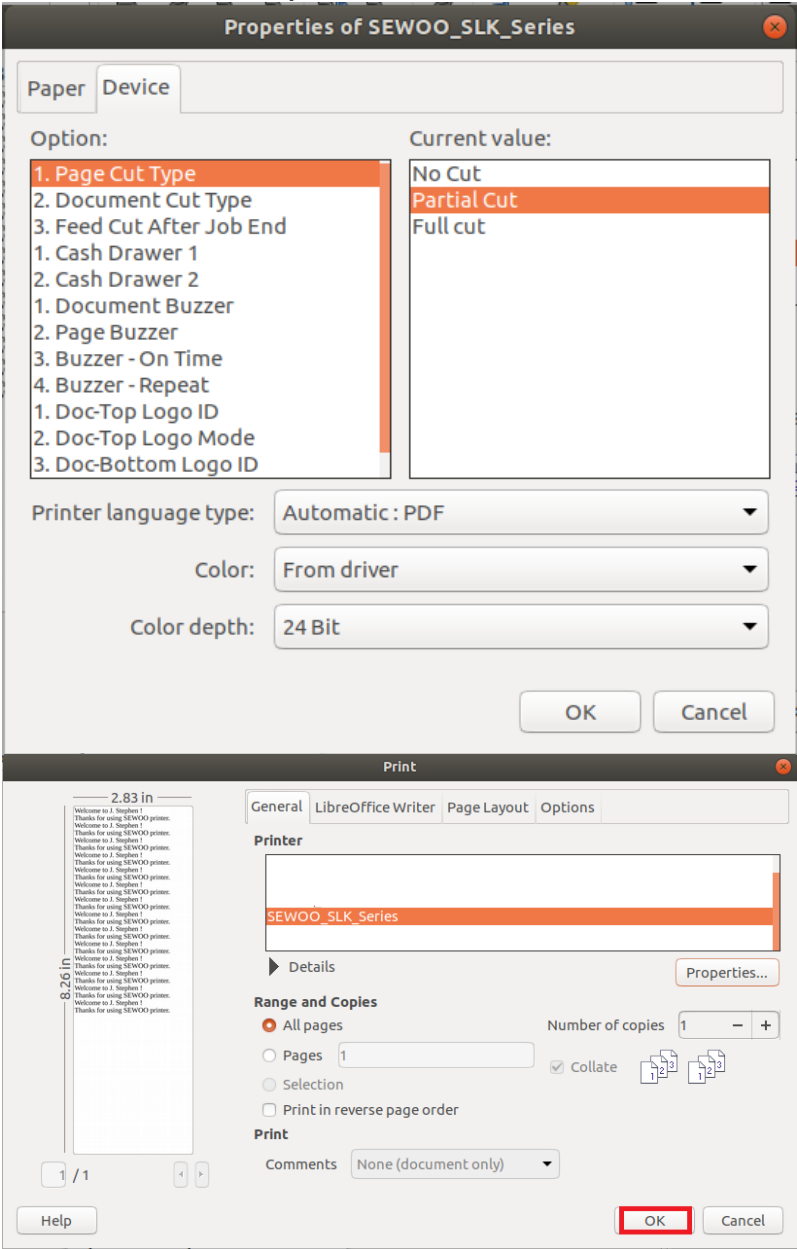
SEWOO/SLK%20series

heets=none, none media=om_x-72-mmy-210-mm_71.97x209.9mm sides=one-sided

In this case, LibreOffice is used to test the printing function of Linux driver. Open your test file and click “file” → “Print”. Then check if any properties need to be set by clicking Properties button.



Select the setting needed and click ok to return to print page. Then click ok to print.



sewoo

Aroot Co.,Ltd.

28-6, Gajangsaneopdong-ro, Osan-si, Gyeonggi- do, 18103, Republic of Korea

TEL : +82-31-8077-5000 FAX : +82-31-459-8880

www.miniprinter.com