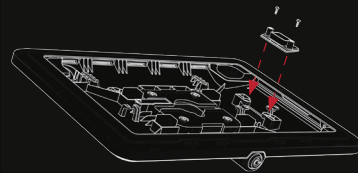
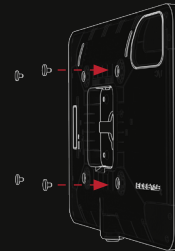


1. Unlock case with keys provided and remove faceplate.



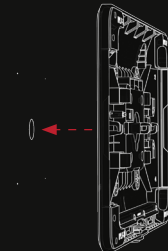
**Optional Cable Cutout**  
Unscrew existing closed cable cutout and install the open cable cutout.



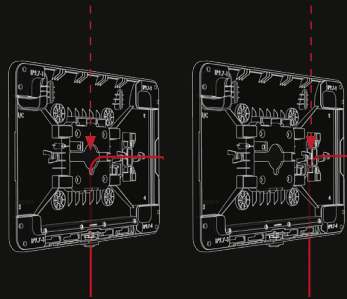
2. Remove the VESA plugs.



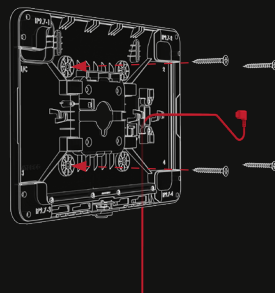
3. Drill pilot holes to assist with screw base mounting.



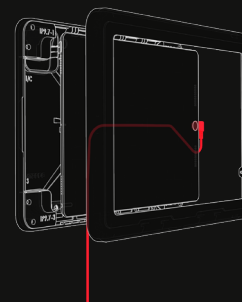
**Cable management option**  
If you are running your charging cable through the wall, ensure to drill a larger hole to feed cable through.



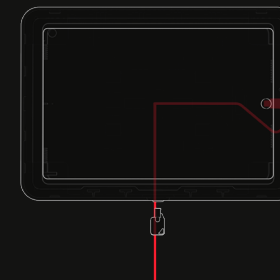
4. Run the cable either: a) Through the wall. b) Through the optional cable cutout.



5. Screw case to the wall using the VESA holes.



6. Plug in your tablet while placing it into the case.



7. Place faceplate back on and lock.

For more information or to contact our sales & customer support team please click on the links below:

[Contact Us](#)

[Warranty & Returns](#)

[Shipping](#)